

Parameter Estimation of Distorted Signals Using Prony Method

T. Lobos, J. Rezmer, P. Schegner, *Member, IEEE*

Abstract—Modern frequency power converters generate a wide spectrum of harmonic components. Large converter systems can also generate non-characteristic harmonics and interharmonics. Standard tools of harmonic analysis based on the Fourier transform assume that only harmonics are present and the periodicity intervals are fixed, while periodicity intervals in the presence of interharmonics are variable and very long. In the case of frequency converters the periods of the main component are unknown. The Prony method as applied for signal analysis in power frequency converter was tested in the paper. The method does not show the disadvantages of the traditional tools and allow exact estimation the frequencies of all or dominant components, even when the periodicity intervals are unknown. To investigate the appropriateness of the method several experiments were performed. For comparison, similar experiments were repeated using the FFT. The comparison proved the superiority of the Prony method.

Index Terms—Discrete Fourier transforms, frequency conversion, frequency estimation, harmonic analysis, power quality, power system harmonics.

I. INTRODUCTION

The quality of voltage waveforms is nowadays an issue of the utmost importance for power utilities, electric energy consumers and also for the manufactures of electric and electronic equipment. The liberalization of European energy market will strengthen the competition and is expected to drive down the energy prices. This is reason for the requirements concerning the power quality. The voltage waveform is expected to be a pure sinusoidal with a given frequency and amplitude. Modern frequency power converters generate a wide spectrum of harmonic components witch deteriorate the quality of the delivered energy, increase the energy losses as well as decrease the reliability of a power system. In some cases, large converters systems generate not only characteristic harmonics typical for the ideal converter operation, but also considerable amount of non-characteristic harmonics and interharmonics which may strongly deteriorate the quality of the power supply voltage [1]. Interharmonics are defined as non-integer harmonics of the main fundamental under consideration. The estimation of the components is very important for control and protection tasks. The design of

harmonics filters relies on the measurement of distortions in both current and voltage waveforms.

There are many different approaches for measuring harmonics, like FFT, application of adaptive filters, artificial neural networks, SVD, higher-order spectra, etc [2,3,4,5]. Most of them operate adequately only in the narrow range of frequencies and at moderate noise levels. The linear methods of system spectrum estimation (Blackman-Tukey), based on the Fourier transform, suffer from the major problem of resolution. Because of some invalid assumptions (zero data or repetitive data outside the duration of observation) made in these methods, the estimated spectrum can be a smeared version of the true spectrum [6, 7].

These methods usually assume that only harmonics are present and the periodicity intervals are fixed, while periodicity intervals in the presence of interharmonics are variable and very long [1]. It is very important to develop better tools of parameter estimation of signal frequency components.

In the case of power frequency converter the periodicity intervals are unknown. Identification of some power converter faults can be a difficult task, especially in under-load- conditions. Different faults cause specific additional distortions of voltage and current waveforms. Detection of additional frequency components can be used for fault identification.

In this paper the frequencies of signal components are estimated using the Prony model. Prony method is a technique for modelling sampled data as a linear combination of exponentials. Although it is not a spectral estimation technique, Prony method has a close relationship to the least squares linear prediction algorithms used for AR and ARMA parameter estimation. Prony method seeks to fit a deterministic exponential model to the data in contrast to AR and ARMA methods that seek to fit a random model to the second-order data statistics.

II. PRONY METHOD

Prony method is a technique for extracting sinusoid or exponential signals from time series data, by solving a set of linear equations.

Assuming the N complex data samples $x[1], \dots, x[N]$ the investigated function can be approximated by M exponential functions:

$$y[n] = \sum_{k=1}^M A_k e^{(\alpha_k + j\omega_k)(n-1)T_p + j\psi_k} \quad (1)$$

T. Lobos and J. Rezmer are with the Wroclaw University of Technology, 30-370 Wroclaw, Poland (e-mail: lobos@ipee.pwr.wroc.pl).

P. Schegner is with the Technical University of Dresden, 01062 Dresden, Germany (e-mail: schegner@ieeh.et.tu-dresden.de).

where $n = 1, 2, \dots, N$
 T_p – sampling period,
 A_k – amplitude
 α_k – damping factor,
 ω_k – angular velocity
 ψ_k – initial phase.

The discrete-time function may be concisely expressed in the form

$$y[n] = \sum_{k=1}^M h_k z_k^{n-1} \quad (2)$$

where $h_k = A_k e^{j\psi_k}$; $z_k = e^{(\alpha_k + j\omega_k)T_p}$

The estimation problem bases on the minimization of the squared error over the N data values:

$$\delta = \sum_{n=1}^N |\varepsilon[n]|^2 \quad (3)$$

where $\varepsilon[n] = x[n] - y[n] = x[n] - \sum_{k=1}^M h_k z_k^{n-1}$ (4)

This turns out to be a difficult nonlinear problem. It can be solved using the Prony method that utilizes linear equation solutions.

If as many data samples are used as there are exponential parameters, then an exact exponential fit to the data may be made.

Consider the M -exponent discrete-time function:

$$x[n] = \sum_{k=1}^M h_k z_k^{n-1} \quad (5)$$

The M equations of (5) may be expressed in matrix form as:

$$\begin{bmatrix} z_1^0 & z_2^0 & \dots & z_M^0 \\ z_1^1 & z_2^1 & \dots & z_M^1 \\ \vdots & \vdots & \dots & \vdots \\ z_1^{M-1} & z_2^{M-1} & \dots & z_M^{M-1} \end{bmatrix} \cdot \begin{bmatrix} h_1 \\ h_2 \\ \vdots \\ h_M \end{bmatrix} = \begin{bmatrix} x[1] \\ x[2] \\ \vdots \\ x[M] \end{bmatrix} \quad (6)$$

The matrix equation represents a set of linear equations that can be solved for the unknown vector of amplitudes.

Prony proposed to define the polynomial that has the z_k exponents as its roots:

$$\begin{aligned} F(z) &= \prod_{k=1}^M (z - z_k) = \\ &= (z - z_1)(z - z_2) \dots (z - z_M) \end{aligned} \quad (7)$$

The polynomial may be represented as the sum:

$$\begin{aligned} F(z) &= \sum_{m=0}^M a[m] z^{M-m} = \\ &= a[0]z^M + a[1]z^{M-1} + \dots + a[M-1]z + a[M] \end{aligned} \quad (8)$$

Shifting the index on (5) from n to $n-m$ and multiplying by the parameter $a[m]$ yield:

$$a[m]x[n-m] = a[m] \sum_{k=1}^M h_k z_k^{n-m-1} \quad (9)$$

The (9) can be modified into:

$$\begin{aligned} \sum_{m=0}^M a[m]x[n-m] &= \\ &= \sum_{k=1}^M h_k z_k^{n-M} \left\{ \sum_{m=0}^M a[m] z_k^{M-m-1} \right\} \end{aligned} \quad (10)$$

The right-hand summation in (10) may be recognize as polynomial defined by (8), evaluated at each of its roots z_k yielding the zero result:

$$\sum_{m=0}^M a[m]x[n-m] = 0 \quad (11)$$

The equation can be solved for the polynomial coefficients. In the second step the roots of the polynomial defined by (8) can be calculated. The damping factors and sinusoidal frequencies may be determined from the roots z_k .

For practical situations, the number of data points N usually exceeds the minimum number needed to fit a model of exponentials, i.e. $N > 2M$. In the overdetermined data case, the linear equation (11) must be modified to:

$$\sum_{m=0}^M a[m]x[n-m] = e[n] \quad (12)$$

The estimation problem bases on the minimization of the total squared error:

$$E = \sum_{n=M+1}^N |e[n]|^2 \quad (13)$$

When estimating the parameters of the signal components, in the case of heavy distorted waveforms, we identify apart from some sinusoidal components, also some components with relativ great damping factors. In reality they do not exist, but are caused by noise and computation errors. To eliminate the components we divide the estimated amplitudes by damping factors and choose the components with the biggest results of the division.

The investigations have been carried out using also the modified Prony algorithm [8], which maximises the likelihood of the fitting problem. For different numbers of the estimated exponential components M ($5 \dots N/2$, *changed by step of 5*) the square error of the approximation was calculated. As optimal was chosen the number which assures the minimal error. From the calculated components, the components with the smallest relation A/α has been neglected.

III. INDUSTRIAL FREQUENCY CONVERTER

The investigated drive represents a typical configuration of industrial drives, consisting of a three-phase asynchronous motor and a power converter, composed of a single-phase half-

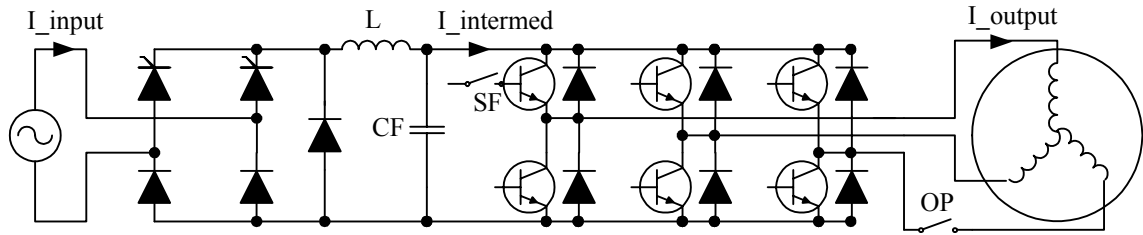


Fig. 1 Industrial converter drive

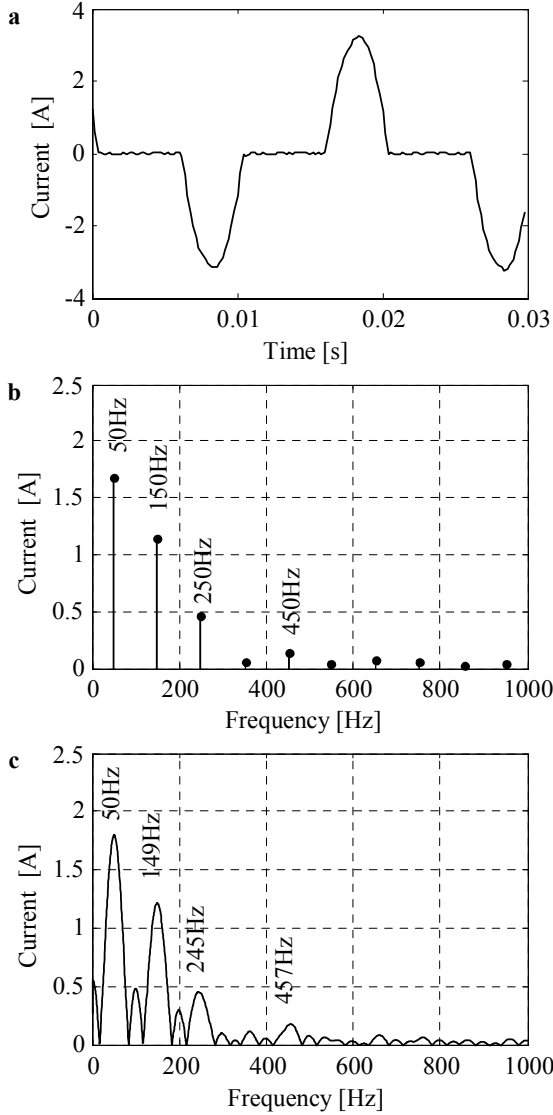


Fig. 2. Current at the input of a frequency converter (I_{input}), under normal conditions (a); investigation results: Prony $N=150$, $M=65$ (b); FFT $N=150$ (c), $f_p=5000\text{Hz}$

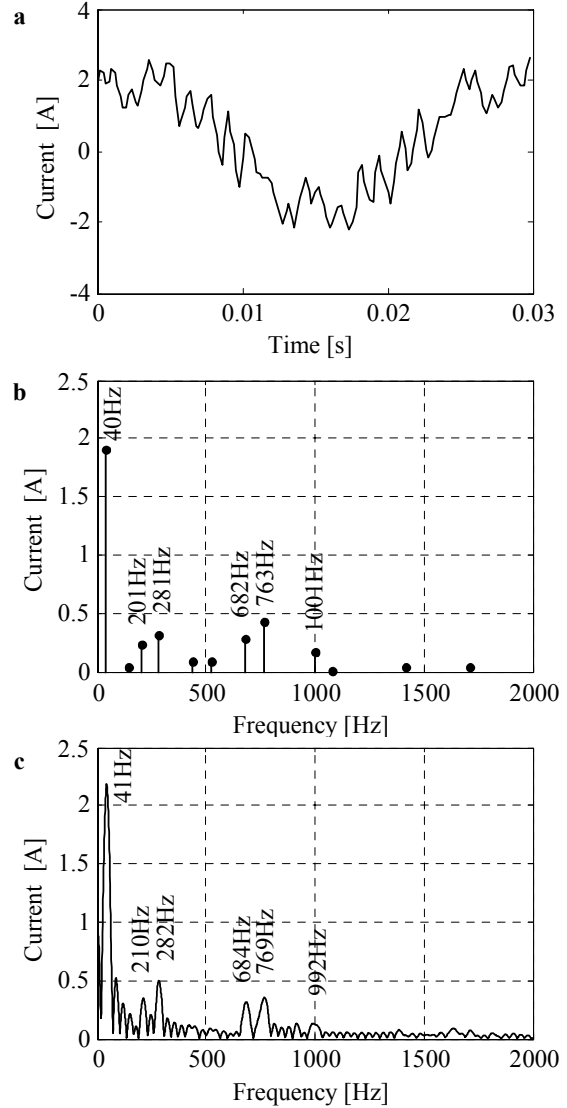


Fig. 3. Current at the output of a frequency converter (I_{output}), under normal conditions (a); investigation results: Prony $N=150$, $M=70$ (b); FFT $N=150$ (c), $f_p=5000\text{Hz}$

controlled bridge rectifier and a voltage source converter (Fig. 1) [10]. The currents waveforms at the converter input (I_{input}) (Fig. 2) and at the converter output (I_{output}) (Fig. 3), during normal conditions, were investigated using the Prony and FFT methods. The main frequency of the waveform at the converter input was 50 Hz , and at the converter output 40 Hz . The following harmonics have been detected: at the converter input: 3^{rd} , 5^{th} and 9^{th} , and at the converter output: 5^{th} , 7^{th} , 17^{th} ,

19^{th} , and 25^{th} . It is also possible to estimate the frequency of the fundamental component. The Prony method enables to obtain a little more exact results than the Fourier algorithm. Estimation of the main component frequency makes it possible to choose an appropriate sampling window for the FFT.

Figs 4, 5 and 6 show the current waveforms in the intermediate circuit ($I_{intermed}$). Under fault free normal conditions (Fig. 4), apart from dc compo-

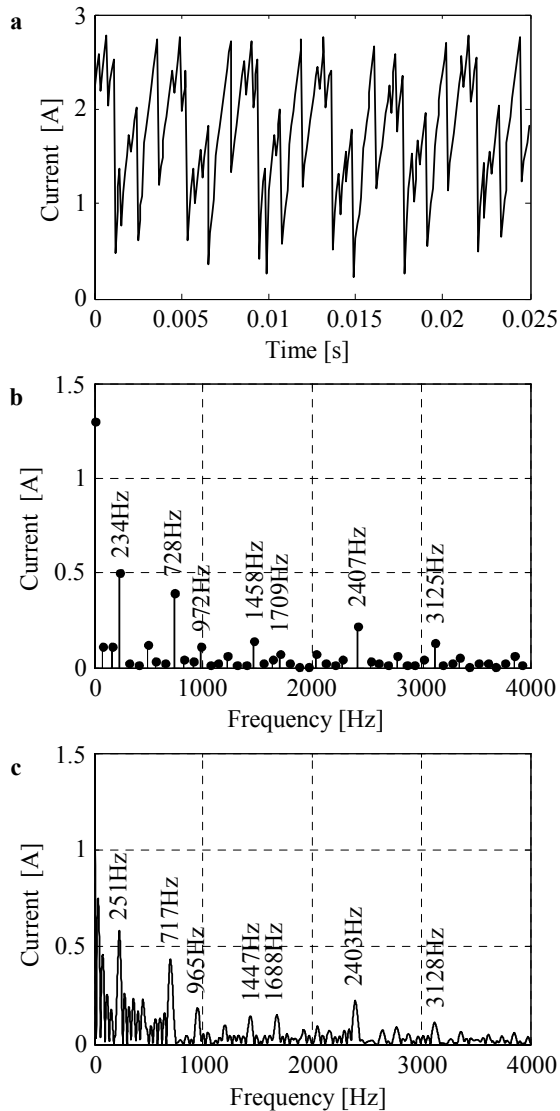


Fig. 4. Current in the intermediate circuit ($I_{intermed}$), under normal conditions (a), investigation results: Prony $N=250$, $M=120$ (b); FFT $N=250$ (c), $f_p=10$ kHz

ment, the following frequencies have been detected, when applying the sampling window equal to 25 ms.: *ca.* 240, 720, 970, 1460, 1700, 2400, 3100 Hz. For comparison, Fig. 6 shows investigation results for the sampling window equal to 10 ms. In the first case the results are more exact. Breaking conductor in one phase at the output of the converter changes significantly the current waveform in the intermediate circuit (Fig. 5). Additional frequency component (80, 800 Hz) have been detected. Detection of the component indicates a fault.

IV. CONCLUSIONS

It has been shown that a high-resolution spectrum estimation method, such as Prony method could be effectively used for estimation of the frequencies of signal components. The accuracy of the estimation depends on the signal distortion, the sampling window and on number of samples taken into the estimation process.

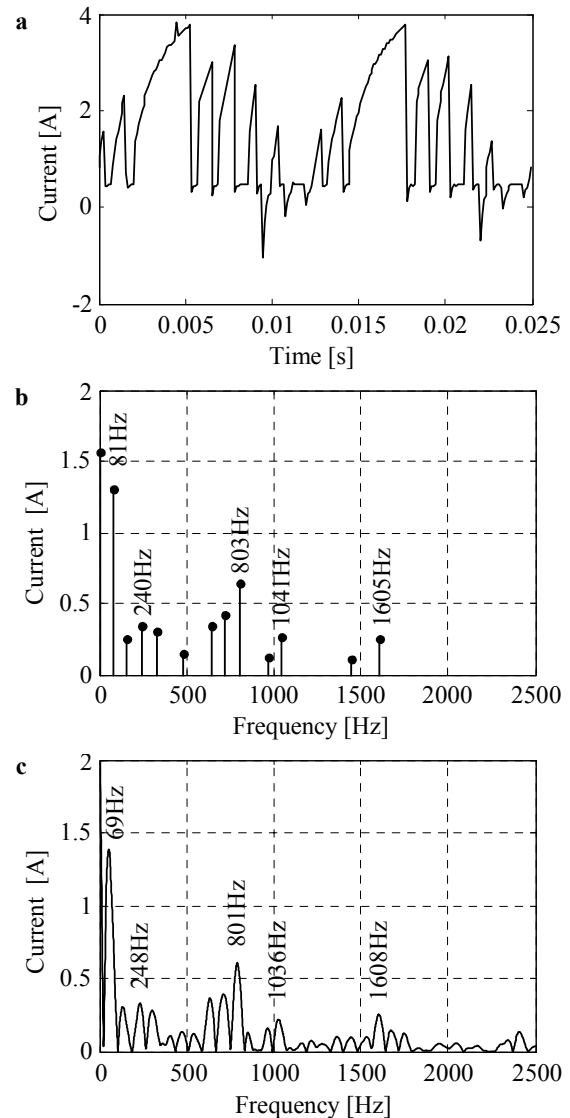


Fig. 5. Current in the intermediate circuit ($I_{intermed}$), after breaking one phase at the output (a), investigation results: Prony $N=250$, $M=125$ (b); FFT $N=250$ (c), $f_p=10$ kHz

The proposed method was investigated under different conditions and found to be a variable and efficient tool for detection of all higher harmonics existing in a signal. It also makes it possible the estimation of frequencies of interharmonics.

Detection of some non-characteristic signal components can be used for identification of frequency converter faults.

V. REFERENCES

- [1] R. Carbone, D. Menniti, N. Sorrentino, and A. Testa, "Iterative Harmonics and Interharmonic Analysis in Multiconverter Industrial Systems", *8th Int. Conference on Harmonics and Quality of Power, Athens (Greece)*, 1998, pp. 432-438.
- [2] T. Lobos and K. Eichhorn, "Recursive Real-Time Calculation of Basic Waveforms of Signals", *IEE Proc. Pt.C*, vol. 138, no 6, November 1991, pp. 469-470.
- [3] Z. Leonowicz, T. Lobos, P. Ruczewski and J. Szymanda "Application of Higher-Order Spectra for Signal Processing in Electrical Power Engineering", *Int. Journal for Computation and Mathematics in Electronic Engineering COMPEL*, , vol. 17, no. 5/6, pp. 602-611, 1998.

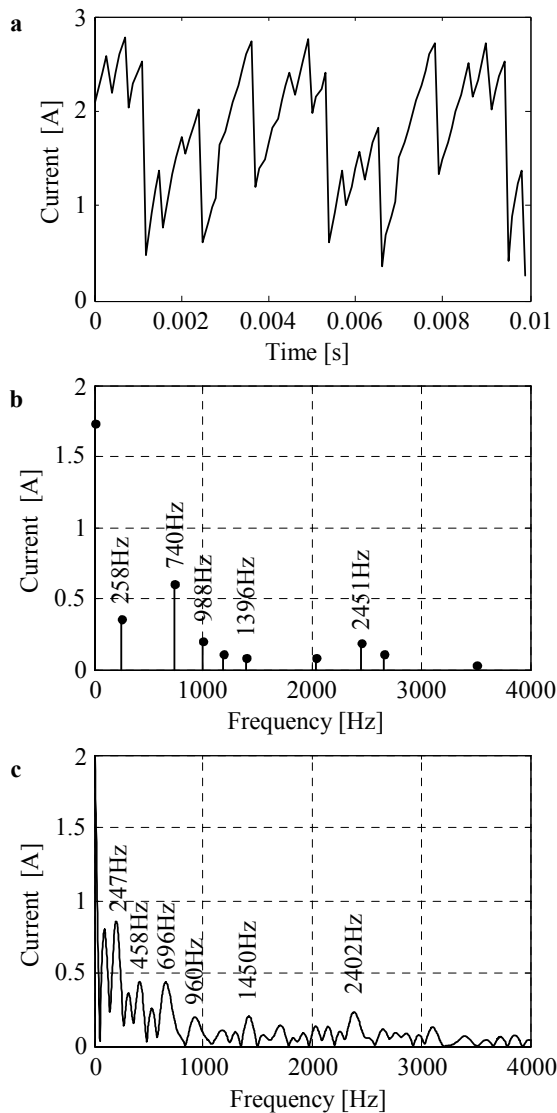


Fig. 6. Current in the intermediate circuit ($I_{intermed}$), under normal conditions (a), investigation results: Prony $N=100$, $M=49$ (b); FFT $N=100$ (c), $f_p=10$ kHz

- [4] T. Lobos, T. Kozina and H.J. Koglin, "Power System Harmonics Estimation Using Linear Least Squares Method and SVD", *IEE Proc. on Gen. Transm. and Distrib.*, vol. 148, No. 6, pp. 567-572 Nov. 2001
- [5] M. Meunier and F. Brouage, "Fourier Transform, Wavelets, Prony Analysis: Tool for Harmonics and Quality of Power", *8th Int. Conference on Harmonics and Quality of Power*, Athens (Greece), 1998, pp. 71-76.
- [6] S. L. Marple, *Digital Spectral Analysis*, Prentice-Hall, Englewood Cliffs, 1987
- [7] S. M. Kay, *Modern Spectral Estimation: Theory and Application*, Englewood Cliffs: Prentice-Hall, 1988, pp. 224-225.
- [7] S. M. Kay, *Modern Spectral Estimation: Theory and Application*, Englewood Cliffs: Prentice-Hall, 1988, pp. 224-225.
- [8] M. R. Osborne and G. K. Smyth "A modified Prony algorithm for exponential function fitting. *SIAM J. Sci. Statist. Comput.*, vol. 16, pp. 119-138.
- [9] T. Lobos and J. Rezmer, "Real Time Determination of Power System Frequency", *IEEE Trans. on Instrumentation and Measurement*, August 1997, vol. 46, no 4, pp. 877-881.
- [10] G. Gentile, N. Rotondale, M. Franceschini and C. Tassoni, "Fault operation of inverter-fed induction motor", in *Proc. 31st Universities Power Engineering Conf. Vol. 2*, pp. 353-360.

Tadeusz Lobos received the M.Sc., Ph.D. and Habilitate Doctorate (Dr Sc.) degrees, all in electrical engineering, from the Wroclaw University of Technology, Poland in 1960, 1967, and 1975, respectively. He has been with the Department of Electrical Engineering, Wroclaw University of Technology, since 1960, where he became a Full Professor in 1989. From 1982 to 1986, he worked at the University of Erlangen-Nuremberg, Germany. His current research interests are in the areas of transients in power systems, control and protection, and especially application of neural networks and signal processing methods in power systems.

The Alexander von Humboldt Foundation, Germany awarded Dr. Lobos a Research Fellowship in 1976 and he spent this fellowship at the Technical University of Darmstadt. He received the Humboldt Research Award, Germany in 1998.

Jacek Rezmer received M.Sc. and Ph.D. degrees from the Wroclaw University of Technology, Poland, in 1987 and 1995, respectively. His field of interests include digital signal processing and computer measurement techniques and especially their applications in electrical engineering.

Peter Schegner (M^o 1999) studied Electrical Power Engineering at the Darmstadt University of Technology (Germany) where he received the M.Sc. degree in 1982. After that he worked as a system engineer in the field of power system control and became a member of the scientific staff at the Saarland University (Germany), receiving the Ph.D. degree in 1989 with a thesis on the earth-fault distance protection. From 1989 until 1995 he worked as head of the development department of protection systems at the AEG, Frankfurt a.M./Germany. In 1995 he became a Full Professor and Head of the Institute of Electrical Power Systems and High Voltage Engineering at the Dresden University of Technology (Germany).